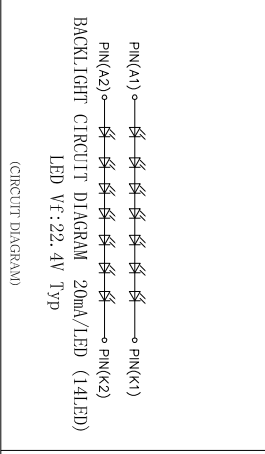


Basic Specification:

Display Type:	5:46 FHD LTPS_TFT
Resolution:	NORMALLY Black TRANSMISSIVE 1080 (RGB) #1920
LCM Driver IC:	07M19011-C5
Touch Driver IC:	G15688
Viewing Angle(U/D/L/R):	80/80/80/80 Typ
LCM Brightness:	330 cd/m ² Min, 380 cd/m ² Typ
Contrast:	800 Typ
MISC:	70% Typ
Uniformity:	80% Min
Backlight:	1Inches, 40mA (20mA/LED)
Interface:	MIPI VIDEO MODE
Operating Temp:	-20° C ~ 70° C
Storage Temp:	-30° C ~ 80° C
Operating Voltage:	VCC=1.8V Typ VCC+=+5V Typ
Plumeness:	0.35MM MAX
12C Address:	R59R/R59H



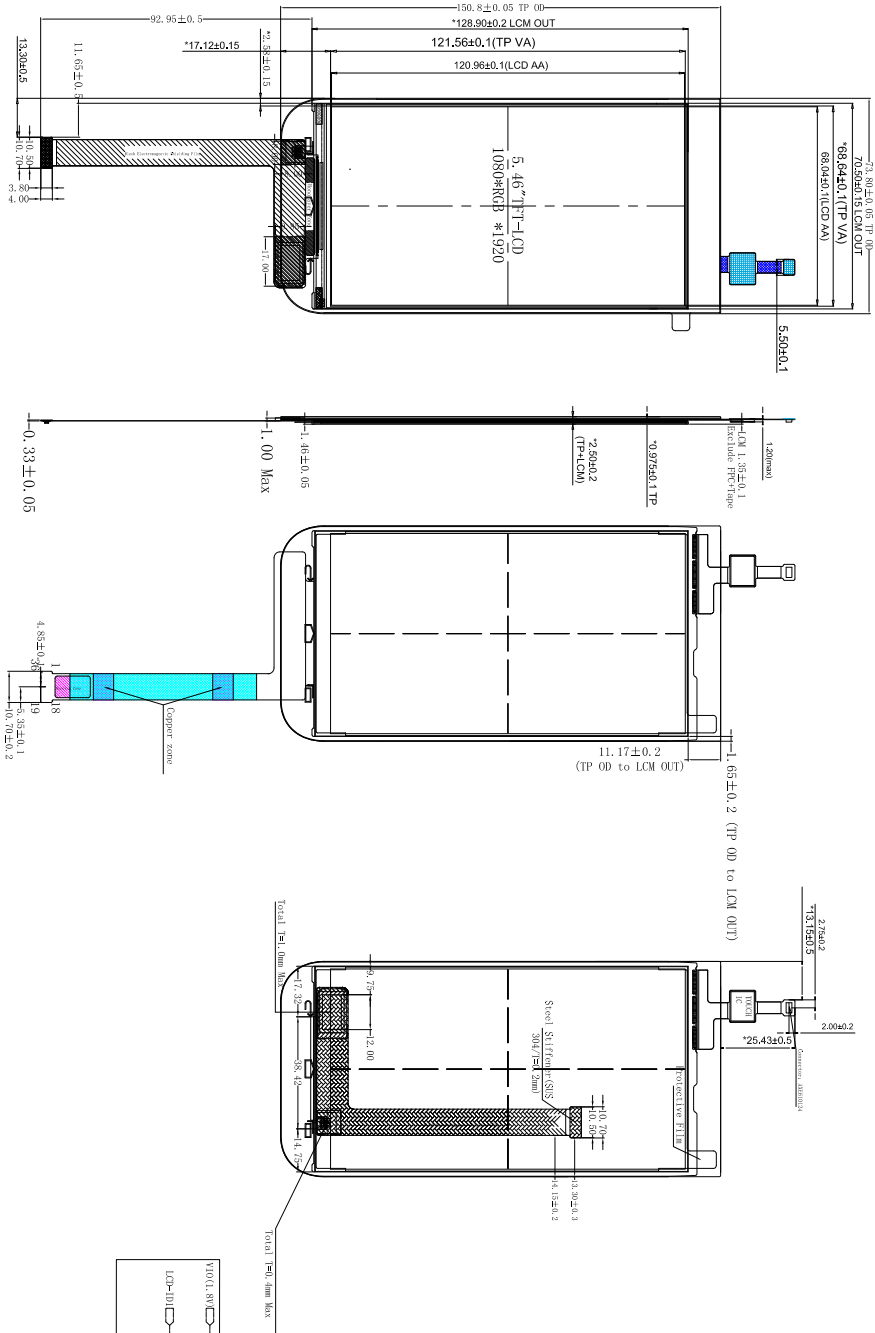
NOTE:

- 1.Viewing Direction: Full View
- 2.This Product Meets The Requirements Of RoHS
- 3.GENERAL TOLERANCE: ±0.2
- 4.Customer Terminal Use LCM Connector Model: A05396124
- 5.Customer Terminal Use TP Connector Model: A05310124
- 6.ESD (ohmic Machine): Contact+/-8KV, Air +/-12KV

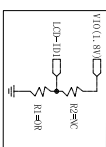
Front View

Side View

Back View



TP PIN Define:	
1	GND
2	GND
3	GND
4	1P8V
5	CTP_ID
6	RST
7	INT
8	SCL
9	SDA
10	2P8V



No.	PIN NAME
1	GND
2	MIPI_DSI_D0M
3	MIPI_DSI_D0P
4	GND
5	MIPI_DSI_D0N
6	MIPI_DSI_D0P
7	GND
8	MIPI_DSI_CN
9	MIPI_DSI_CP
10	GND
11	MIPI_DSI_DMV
12	MIPI_DSI_D0P
13	GND
14	MIPI_DSI_D0M
15	MIPI_DSI_D0P
16	GND
17	NC
18	INT
19	TE
20	LCD_PWM
21	IM(NC)
22	RST
23	I/O(LAN)
24	GND
25	TP(+H)
26	NC
27	TP(-L)
28	GND
29	OTP
30	NC
31	LEDK2
32	LEDK1
33	NC
34	LEDA
35	LEDA
36	NC

VER.	SYMBOL	AMENDMENT	SIGN	DATE	DRAWN	ME. CHECKED	EE. CHECKED	APPROVED	TITLE
									MODULE SPEC.

DRAWING NO.
 3rd Angle
 SHEET 1OF 1

深圳市优奕视界有限公司
SHENZHEN VIEWE TECHNOLOGY CO., LTD

VER.	SYMBOL	AMENDMENT	SIGN	DATE